

# Fairest Lord Jesus

♩=94  
ballad

tune: CRUSADERS' HYMN

words: Anonymous  
music: *Schlesische Volkslieder*  
arr. Don Chapman

D A7 Bm Em Asus4 A7

5 D A7 Bm Em7 Asus4 A

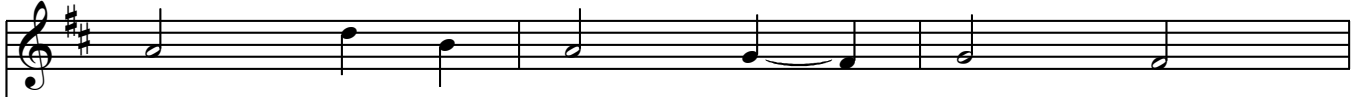
9

*mf*

1. Fair - est Lord	Je - sus,	Rul - er of all	na - ture,
2. Fair are the	mead - ows,	fair - er still the	wood - lands,
3. Fair is the	sun - shine,	fair - er still the	moon - light,

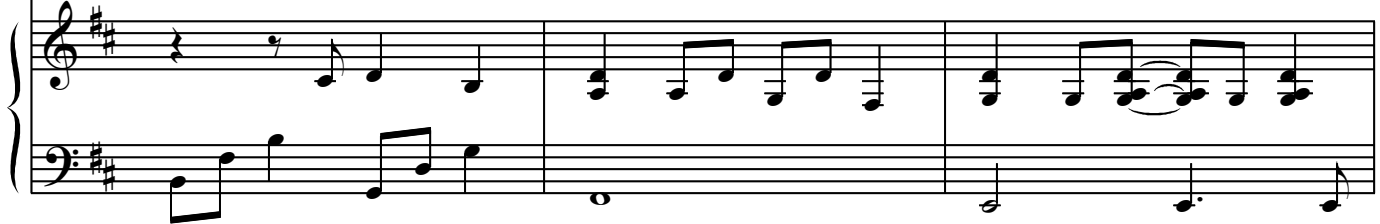
D A Bm7 D/F# Em7 D

13

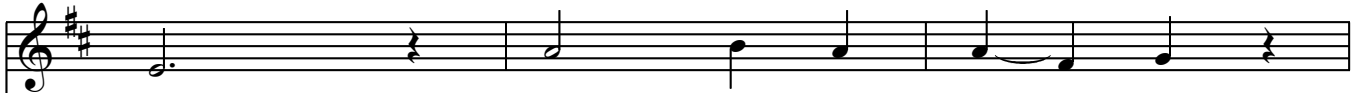


O Thou of God and man the  
Robed in the bloom - ing garb of  
And all the twin - kling star - - ry

Bm G D/F# (Dsus4) Em7



16



Son: Thee will I cher - ish,  
spring: Je - sus is fair - er,  
host: Je - sus shines bright - er,

Asus4 A7 D/F# B7 Em



19



Thee will I hon - or, Thou, my soul's glo - ry, joy and  
Je - sus is pur - er, Who makes the woe - ful heart to  
Je - sus shines pur - er Than all the an - gels heaven can

Em A7 D D/F# G Asus4 A7



23

1, 2

crown.  
sing.

D A7 Bm Em7 Asus4 A

27

3

boast.

D A7 Bm Fm7 Ab/Bb Bb Ab/Bb

31

*f* 4. Beau - ti - ful Sav - ior! Lord of all the na - tions!

Eb Bb Cm7 Eb/G Fm7 Eb

35



Son of \_\_\_ God and \_\_\_ Son of Man!

Cm7 A $\flat$  E $\flat$ /G Fm7 B $\flat$ sus4 B $\flat$



39



Glo - ry and hon - or, praise, ad - o -

E $\flat$ /G C7 Fm7 Fm7



42



ra - tion, Now and for - ev - er - more be

B $\flat$ 7 E $\flat$  E $\flat$ /G A $\flat$  B $\flat$ sus4 B $\flat$



45

1

2

Vocal line for measures 45-48. Measure 45 contains a whole note G4. Measure 46 contains a whole rest. Measure 47 contains a whole note G4. Measure 48 contains a whole rest. The key signature is B-flat major (two flats).

Thine!

Thine!

E $\flat$

Fm7

E $\flat$

B $\flat$

Cm

Piano accompaniment for measures 45-48. The right hand features chords and moving lines, while the left hand provides a steady bass line. Chords are E-flat, Fm7, E-flat, B-flat, and Cm.

49

Vocal line for measures 49-52. Measures 49-52 contain whole rests. The key signature is B-flat major (two flats).

Fm7

B $\flat$ sus4

B $\flat$ 7

E $\flat$

E $\flat$

Piano accompaniment for measures 49-52. The right hand features chords and moving lines, while the left hand provides a steady bass line. Chords are Fm7, B-flat sus4, B-flat 7, E-flat, and E-flat.